

**Statewide Assessment  
Results Presentation:  
Fall Block 2017 and  
Spring 2018  
Administrations  
Palisades Park  
October 17, 2018**

**PARCC**

**Partnership for  
Assessment of  
Readiness for  
College and  
Careers**

**WIDA**

**World-class  
Instructional  
Design and  
Assessment**

**ACCESS for  
ELLs**

**DLM**

**Dynamic  
Learning Maps**

# NEW JERSEY'S STATEWIDE PARCC ASSESSMENT PROGRAM

- 2018 marks the 4th administration of the Partnership for Assessment of Readiness for College and Careers (PARCC).
- Students took PARCC English Language Arts and Literacy Assessments (ELA/L) in grades 3 – 11.
- Students took PARCC Mathematics Assessments in grades 3 – 8 and Course Assessments in Algebra I, Geometry, and Algebra II.

# PARCC PERFORMANCE LEVELS

- Level 1: Did not yet meet expectations
- Level 2: Partially met expectations
- Level 3: Approached expectations
- **Level 4: Met expectations**
- **Level 5: Exceeded expectations**

**Level 4 is the target. It shows that a child has met expectations and is well prepared for the next grade level.**

# Comparison of **Palisades Park's** Spring 2016, Spring 2017, and Spring 2018 PARCC Administrations English Language Arts/Literacy - Percentages

Grade	Level 1 2016	Level 1 2017	Level 1 2018	Level 2 2016	Level 2 2017	Level 2 2018	Level 3 2016	Level 3 2017	Level 3 2018	Level 4 2016	Level 4 2017	Level 4 2018	Level 5 2016	Level 5 2017	Level 5 2018	Change in Level 1 and 2 2016 to 2018	Change in Level 4 and 5 2016 to 2018**
3	17.1	13.5	<b>17.0</b>	15.3	16.3	<b>14.9</b>	14.5	20.6	<b>21.3</b>	44.4	44.0	<b>37.6</b>	8.1	5.7	<b>9.2</b>	-0.5	-5.7
4	3.8	10.6	<b>9.9</b>	14.2	11.4	<b>16.2</b>	18.9	220.	<b>21.8</b>	41.5	42.3	<b>34.5</b>	21.7	13.8	<b>17.6</b>	8.1	-11.1
5	4.8	3.7	<b>9.3</b>	15.4	11.2	<b>12.7</b>	26.9	29.9	<b>17.8</b>	44.2	46.7	<b>43.2</b>	8.7	8.4	<b>16.9</b>	2.6	7.2
6	6.9	8.4	<b>6.6</b>	15.5	9.3	<b>17.9</b>	26.7	27.1	<b>35.8</b>	42.2	38.3	<b>35.8</b>	8.6	16.8	<b>8.5</b>	2.1	-6.5
7	11.3	10.9	<b>19.6</b>	9.3	16.0	<b>7.8</b>	14.4	27.7	<b>15.7</b>	45.4	29.4	<b>26.5</b>	19.6	16.0	<b>30.4</b>	6.8	-8.1
8	11.6	16.8	<b>17.6</b>	10.7	12.9	<b>19.3</b>	21.4	20.8	<b>16.0</b>	39.3	38.6	<b>36.1</b>	17.0	10.9	<b>10.9</b>	14.6	-9.3
9	39.1	29.5	<b>31.2</b>	8.2	13.6	<b>13.6</b>	17.3	18.2	<b>23.2</b>	20.9	28.0	<b>25.6</b>	14.5	10.6	<b>6.4</b>	-2.5	-3.4
10	23.7	45.0	<b>32.8</b>	14.9	11.0	<b>14.1</b>	10.5	10.0	<b>16.4</b>	34.2	21.0	<b>19.5</b>	16.7	13.0	<b>17.2</b>	8.3	-14.2
11	18.1	20.6	<b>53.1</b>	11.4	20.6	<b>7.3</b>	15.2	28.4	<b>14.6</b>	40.0	23.5	<b>17.7</b>	15.2	6.9	<b>7.3</b>	30.9	-30.2

Notes: Percentages may not total 100 due to rounding.

# Comparison of **Palisades Park's** Spring 2016, Spring 2017, Fall Block 2017 and Spring 2018 PARCC Administrations **Mathematics – Percentages**

Grade	Level 1 2016	Level 1 2017	Level 1 Fall 2017 & Spring 2018	Level 2 2016	Level 2 2017	Level 2 Fall 2017 & Spring 2018	Level 3 2016	Level 3 2017	Level 3 Fall 2017 & Spring 2018	Level 4 2016	Level 4 2017	Level 4 Fall 2017 & Spring 2018	Level 5 2016	Level 5 2017	Level 5 Fall 2017 & Spring 2018	Change in Level 1 and 2 2016 to 2018	Change in Level 4 and 5 2016 to 2018**
3	14.2	6.0	<b>15.6</b>	10.4	16.8	<b>16.3</b>	22.4	29.5	<b>20.4</b>	37.3	34.9	<b>36.7</b>	15.7	12.8	<b>10.9</b>	7.3	-5.4
4	5.4	10.7	<b>18.2</b>	28.8	19.8	<b>23.0</b>	28.8	31.3	<b>29.7</b>	35.1	34.4	<b>25.7</b>	1.8	3.8	<b>3.4</b>	7.0	-7.4
5	11.0	8.9	<b>10.7</b>	23.9	24.1	<b>15.6</b>	22.9	36.6	<b>28.7</b>	32.1	25.9	<b>36.9</b>	10.1	4.5	<b>8.2</b>	-8.6	0.8
6	8.4	14.7	<b>15.9</b>	15.1	17.4	<b>27.1</b>	35.3	26.6	<b>30.8</b>	35.3	29.4	<b>20.6</b>	5.9	11.9	<b>5.6</b>	19.5	-8.7
7	11.5	14.4	<b>15.1</b>	11.5	22.4	<b>16.0</b>	26.0	31.2	<b>21.7</b>	42.3	27.2	<b>34.0</b>	8.7	4.8	<b>13.2</b>	8.1	-3.8
8	33.3	25.3	<b>29.7</b>	15.6	15.7	<b>32.7</b>	25.0	26.5	<b>20.8</b>	25.0	32.5	<b>16.8</b>	1.0	0.0	<b>0.0</b>	13.5	-9.2
ALG I	27.1	23.5	<b>16.8</b>	27.1	23.5	<b>25.5</b>	15.0	28.7	<b>21.9</b>	24.8	20.6	<b>32.1</b>	6.0	3.7	<b>3.6</b>	-11.9	4.9
GEO	9.1	23.5	<b>29.3</b>	47.7	40.7	<b>33.7</b>	27.3	30.9	<b>29.3</b>	15.9	4.9	<b>7.6</b>	0.0	0.0	<b>0.0</b>	6.2	-8.3
ALG II	40.0	28.6	<b>41.0</b>	13.0	24.2	<b>25.7</b>	24.0	25.3	<b>8.6</b>	23.0	20.9	<b>20.0</b>	0.0	1.1	<b>4.8</b>	13.7	1.8

Notes: Percentages may not total 100 due to rounding.

# Comparison of Palisades Park's 2016 to 2018 Spring PARCC Administrations English Language Arts/Literacy – Percentage Changes

Grade	Levels 1 & 2 District Trend	Levels 1 & 2 District	Levels 1 & 2 State Trend	Levels 1 & 2 State	Level 3 District Trend	Level 3 District	Level 3 State Trend	Level 3 State	Levels 4 & 5 District Trend	Levels 4 & 5 District	Levels 4 & 5 State Trend	Levels 4 & 5 State
3	-	0.5	-	2.4	+	6.8	-	1.6	-	5.7	+	4.1
4	+	8.1	-	1.8	+	2.9	-	2.7	-	11.1	+	4.5
5	+	2.6	-	1.9	-	9.7	-	2.9	+	7.2	+	4.7
6	+	2.1	-	1.7	+	9.1	-	2.2	-	6.5	+	3.9
7	+	6.8	-	3.3	+	1.3	-	3.1	-	8.1	+	6.3
8	+	14.6	-	3.3	+	5.4	-	1.9	-	9.3	+	5.2
9	-	2.5	-	3.9	+	5.9	-	1.9	-	3.4	+	5.7
10	+	8.3	-	5.3	+	5.9	-	1.2	-	14.2	+	6.6
11*	+	30.9	+	2.0	-	0.6	-	0.9	-	30.2	-	1.1

Notes: Percentages may not total 100 due to rounding.

- The plus sign (+) indicates an increase of the % change from the previous year where a minus sign (-) arrow shows a decrease of the % change from the previous year.

# Comparison of Palisades Park's Spring 2016 to Fall Block 2017 and Spring 2018 PARCC Administrations Mathematics – Percentage Changes

Grade	Levels 1 & 2 District Trend	Levels 1 & 2 District	Levels 1 & 2 State Trend	Levels 1 & 2 State	Level 3 District Trend	Level 3 District	Level 3 State Trend	Level 3 State	Levels 4 & 5 District Trend	Levels 4 & 5 District	Levels 4 & 5 State Trend	Levels 4 & 5 State
3	+	7.3	-	0.7	-	2.0	-	0.6	-	5.4	+	1.3
4	+	7.0	-	2.2	+	0.9	-	0.5	-	7.4	+	2.8
5	-	8.6	-	0.2	+	5.8	-	1.5	+	0.8	+	1.6
6	+	19.5	+	0.6	-	4.5	-	1.2	-	8.7	+	0.5
7	+	8.1	-	1.1	-	4.3	-	3.7	-	3.8	+	4.7
8	+	13.5	-	2.1	-	4.2	-	0.4	-	9.2	+	2.6
Algebra I*	-	11.9	-	4.1	+	6.9	-	0.5	+	4.9	+	4.6
Algebra II	+	13.7	-	2.8	-	15.4	-	0.8	-	8.3	+	3.6
Geometry	+	6.2	-	0.7	+	2.0	-	1.8	+	1.8	+	2.5

\*Some students in grade 8 participated in the PARCC Algebra I assessment in place of the 8<sup>th</sup> grade Math assessment. Thus, PARCC Math 8 outcomes are not representative of grade 8 performance as a whole.

Notes: Percentages may not total 100 due to rounding.

- The plus sign (+) indicates an increase of the % change from the previous year where a minus sign (-) arrow shows a decrease of the % change from the previous year.

# Comparison of **Palisades Park's** Number of Students Tested Spring 2017 and Fall Block and Spring 2018 PARCC Administrations: **English Language Arts/Literacy**

Grade	Students Tested 2018	Students Tested 2017	Difference between number of students tested in 2017 and 2018
3	141	141	0
4	142	123	+19
5	118	107	+11
6	106	107	-1
7	102	119	-17
8	119	101	+18
9	125	132	-7
10	128	100	+28
11*	96	102	-6
<b>TOTAL</b>	<b>1077</b>	<b>1032</b>	<b>+45</b>

Note: "Students Tested" represents individual valid test scores for English Language Arts/Literacy.



# Comparison of Palisades Park's Number of Students Tested Spring 2017 and Fall Block 2017 and Spring 2018 PARCC Administrations: Mathematics

Grade	Students Tested 2018	Students Tested 2017	Difference between number of students tested in 2017 and 2018
3	147	149	-2
4	148	131	+17
5	122	112	+10
6	107	109	-2
7	106	125	-19
8*	101	83	+18
Algebra I	137	136	+1
Algebra II	92	91	+1
Geometry	105	81	+24
<b>TOTAL</b>	<b>1065</b>	<b>1017</b>	<b>+48</b>

\*Some students in grade 8 participated in the PARCC Algebra I assessment in place of the 8<sup>th</sup> grade Math assessment. Thus, PARCC Math 8 outcomes are not representative of grade 8 performance as a whole.

Notes: "Students Tested" represents individual valid test scores for Mathematics.

# Comparison of Palisades Park's Fall Block 2017 Spring 2018 PARCC Administrations English Language Arts/Literacy to New Jersey Percentages for 2018

Grade	Level 1, District	Level 1, State	Level 2, District	Level 2, State	Level 3, District	Level 3, State	Level 4, District	Level 4, State	Level 5, District	Level 5, State
3	17.0	13.5	14.9	13.5	21.3	21.4	21.3	21.4	9.2	8.1
4	9.9	7.6	16.2	12.3	21.8	22.1	34.5	39.1	17.6	18.9
5	9.3	6.9	12.7	12.6	17.8	22.4	43.2	47.2	16.9	10.8
6	6.6	6.2	17.9	13.6	31.1	24.0	35.8	41.3	8.5	14.9
7	19.6	8.6	7.8	10.2	15.7	18.5	26.5	34.1	30.4	28.6
8	17.6	8.7	19.3	11.1	16.0	19.8	36.1	39.9	10.9	20.4
9	31.2	12.3	13.6	12.5	23.2	21.1	25.6	38.0	6.4	16.1
10	32.8	18.3	14.1	12.8	16.4	19.0	19.5	31.8	17.2	18.1
11*	53.1	23.1	7.3	16.6	14.6	22.2	17.7	29.1	7.3	9.0

Notes: Percentages may not total 100 due to rounding.

# Comparison of **Palisades Park's** Fall Block 2017 and Spring 2018 PARCC Administrations Mathematics to New Jersey Percentages for Spring 2018

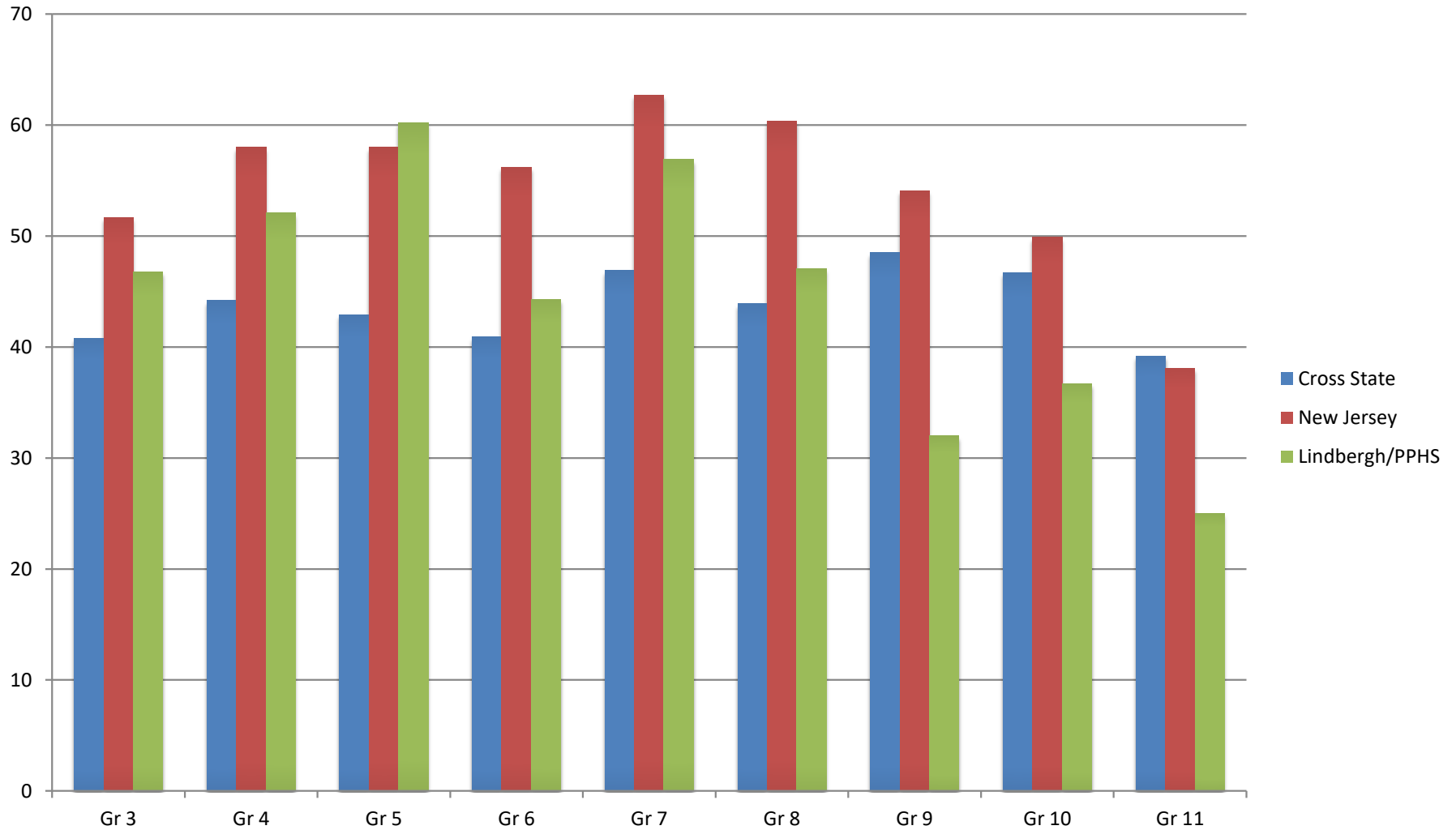
Grade	Level 1, District	Level 1, State	Level 2, District	Level 2, State	Level 3, District	Level 3, State	Level 4, District	Level 4, State	Level 5, District	Level 5, State
<b>3</b>	15.6	8.0	16.3	15.3	20.4	23.7	36.7	37.8	10.9	15.2
<b>4</b>	18.2	7.5	23.0	16.8	29.7	26.3	25.7	41.8	3.4	7.6
<b>5</b>	10.7	7.5	15.6	17.0	28.7	26.7	36.9	38.5	8.2	10.4
<b>6</b>	15.9	8.5	27.1	20.1	30.8	27.9	20.6	35.6	5.6	8.0
<b>7</b>	15.1	7.7	16.0	20.3	21.7	28.6	34.0	36.0	13.2	7.4
<b>8*</b>	29.7	22.0	32.7	22.7	20.8	27.1	16.8	27.2	0.0	1.0
<b>Algebra I</b>	16.8	11.3	25.5	18.6	21.9	24.3	32.1	39.3	3.6	6.5
<b>Algebra II</b>	41.0	31.0	25.7	22.4	8.6	18.0	20.0	24.6	4.8	4.0
<b>Geometry</b>	29.3	9.4	33.7	31.5	29.3	29.6	7.6	24.6	0.0	4.9

\*Some students in grade 8 participated in the PARCC Algebra I assessment in place of the 8<sup>th</sup> grade Math assessment. Thus, PARCC Math 8 outcomes are not representative of grade 8 performance as a whole.

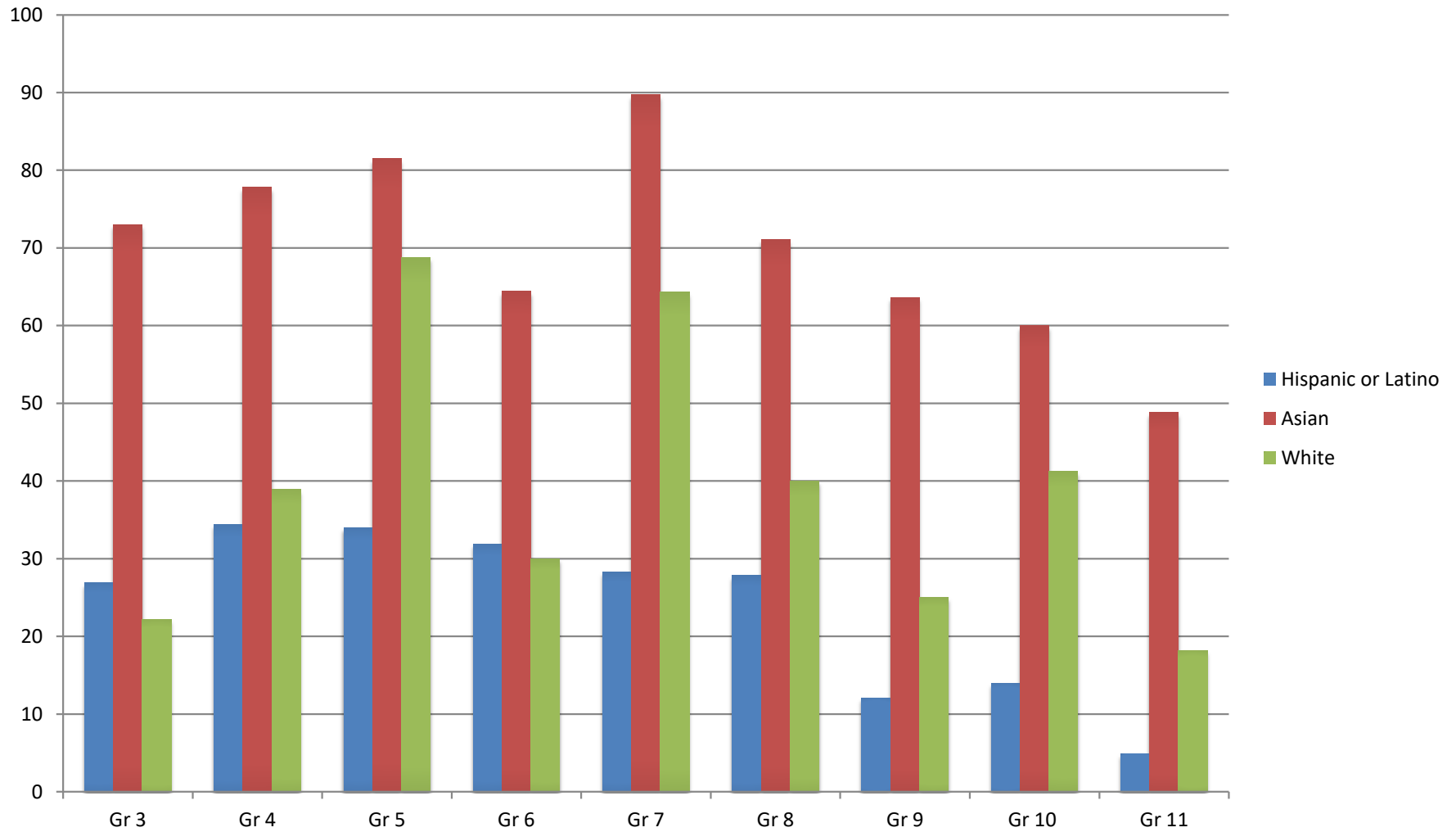
Notes: Percentages may not total 100 due to rounding.

The Fall Block 2017 Scores are included with Spring 2018 scores due to the fact that only one student participated and his/her identity would not be protected if presented separately.

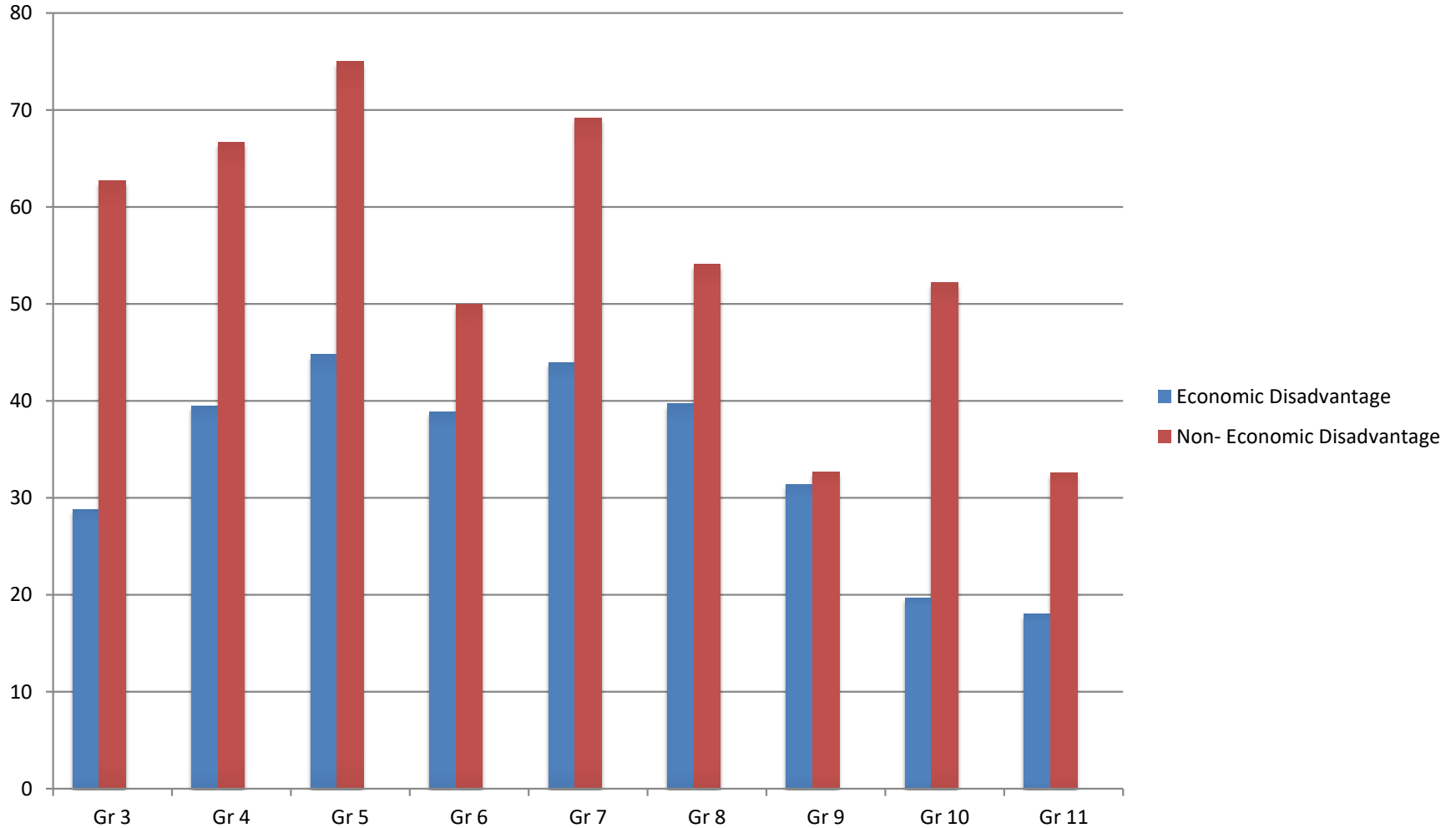
English Language Arts/ Literacy PARCC Assessment Comparison  
Fall Block 2017 and Spring 2018  
% of Students who Met or Exceeded Expectations



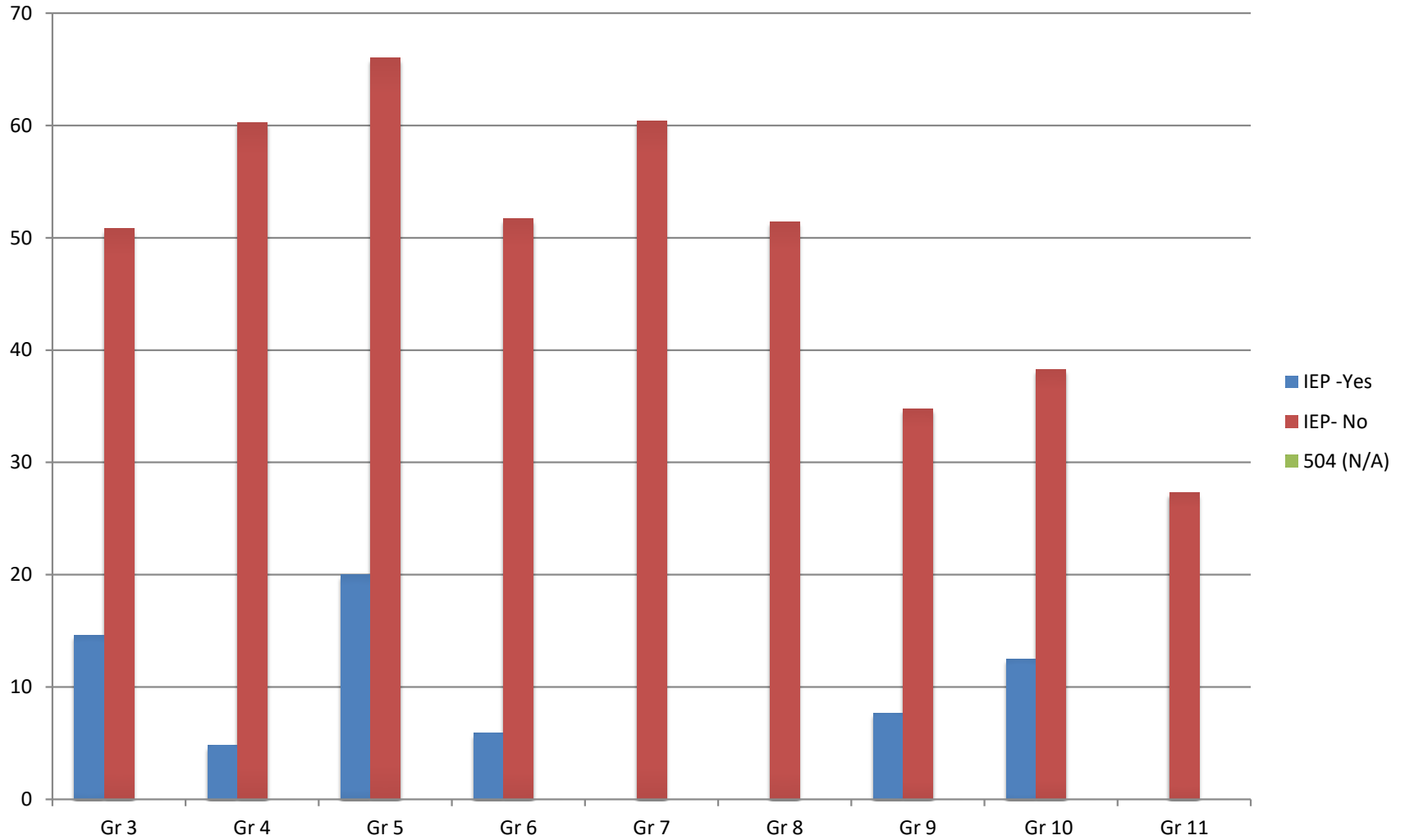
## Subgroup Performance on ELA/L PARCC Assessments by Ethnicity/Race Fall Block 2017 and Spring 2018



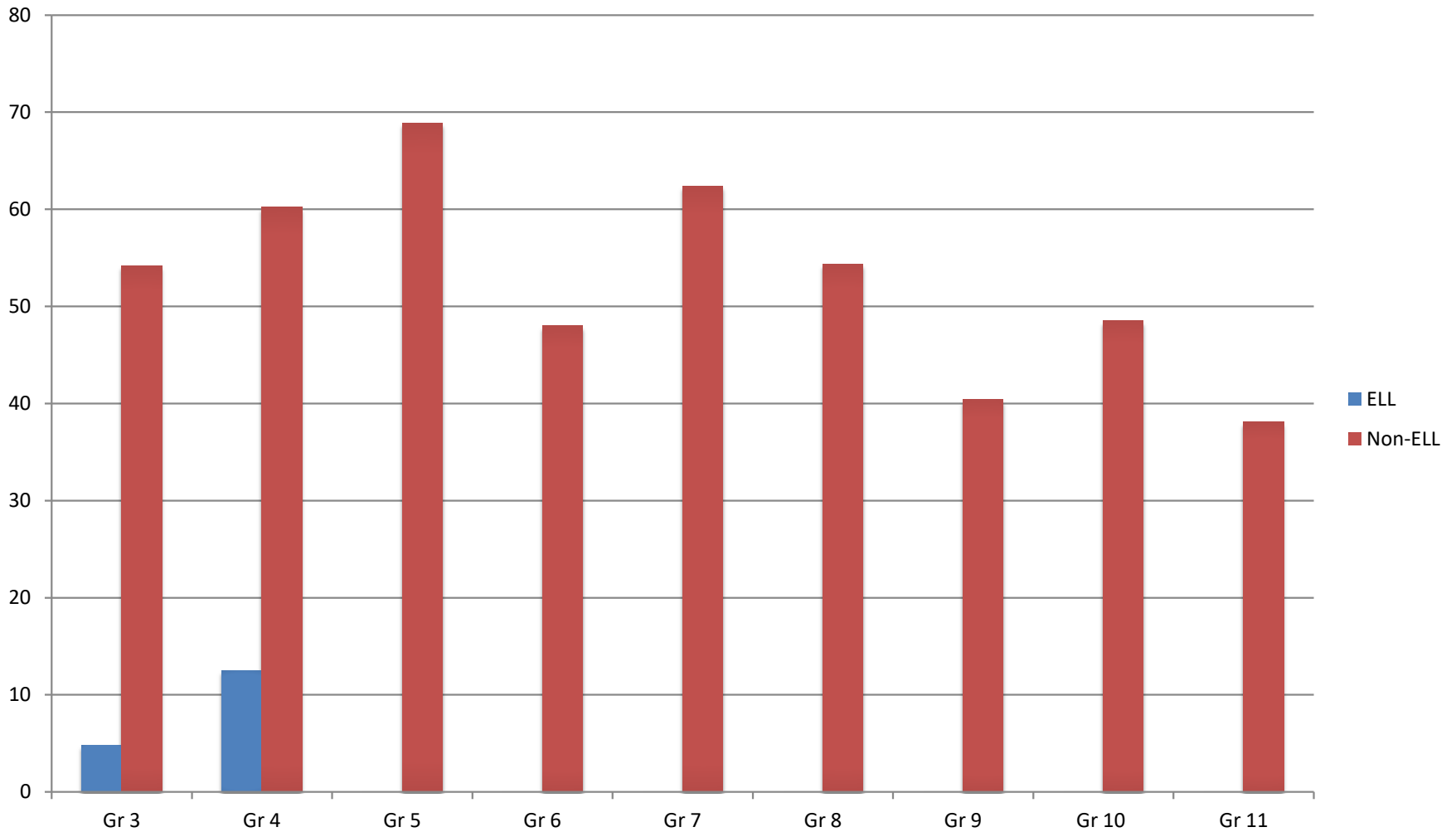
## Subgroup Performance of Non-Economically Disadvantaged vs. Economically Disadvantaged Students on ELA/L PARCC Assessments – Fall Block 2017 and Spring 2018



## Subgroup Performance of Students with Disabilities on ELA/L PARCC Assessments Fall Block 2017 and Spring 2018



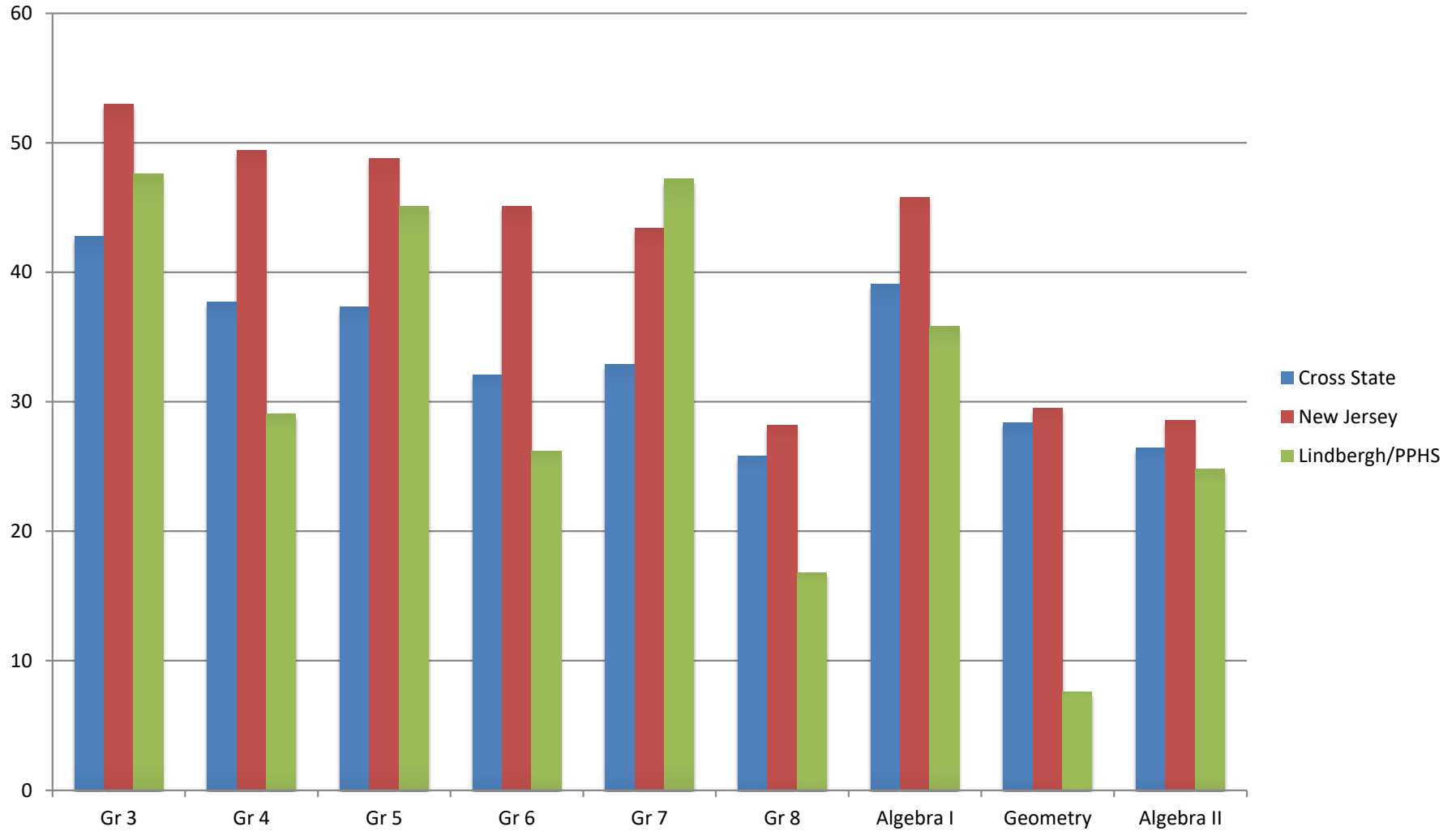
## Performance of ELL Subgroup on ELA/L PARCC Assessments – Fall Block 2017 and Spring 2018



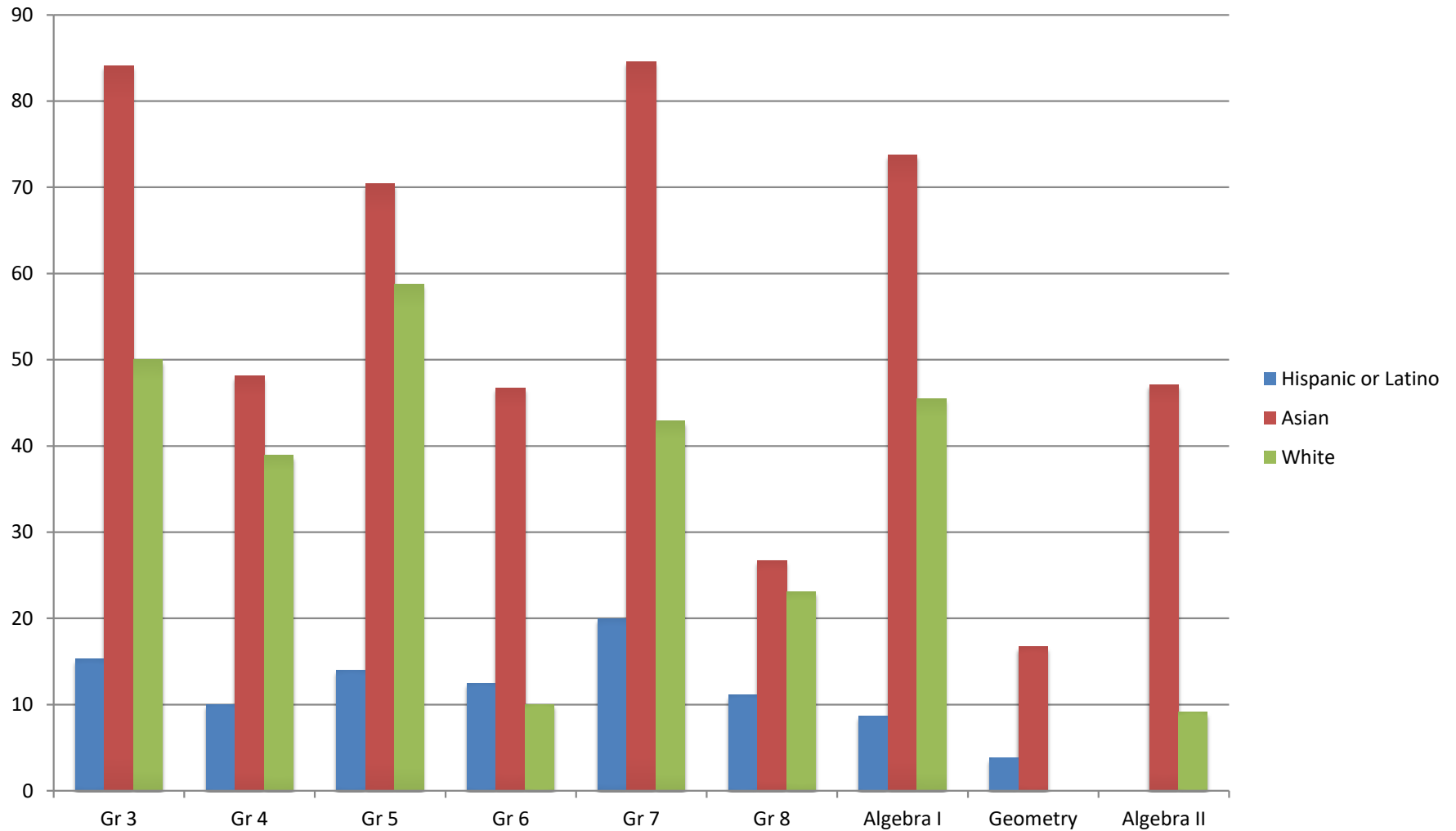


# Mathematics PARCC Assessment Comparison – Fall Block 2017 and Spring 2018

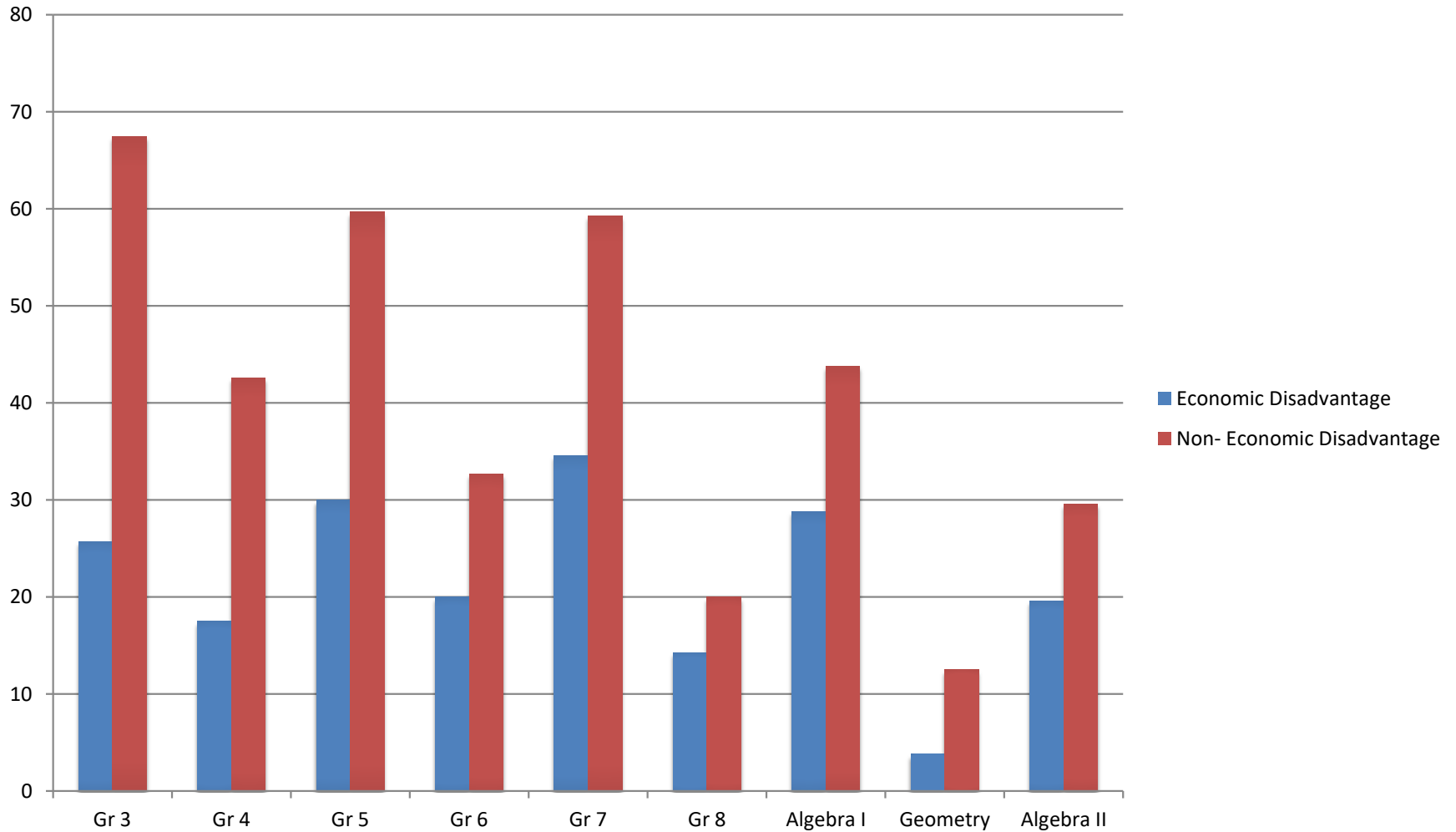
## % of Students who Met or Exceeded Expectations



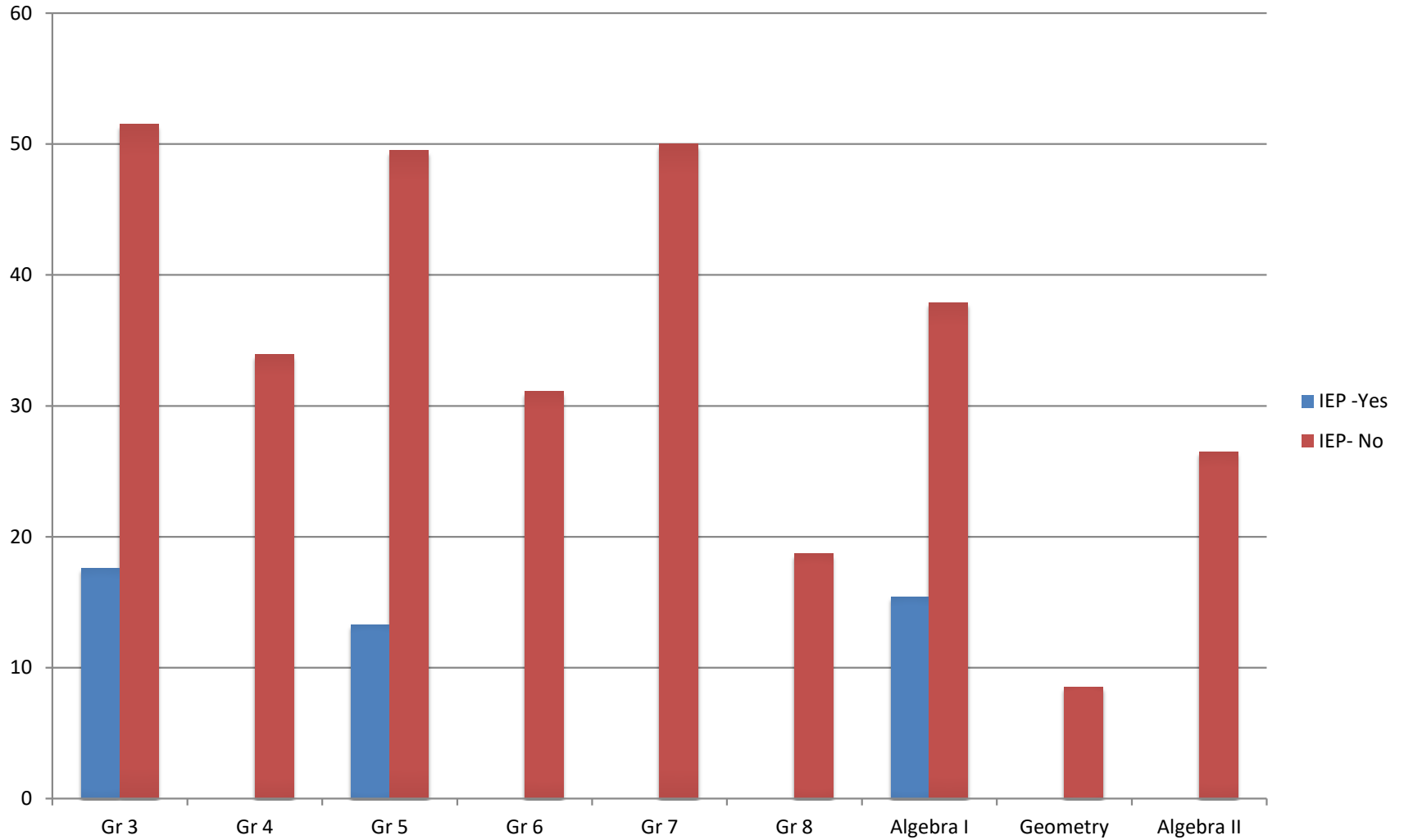
## Subgroup Performance on Math PARCC Assessments by Ethnicity/Race Fall Block 2017 and Spring 2018



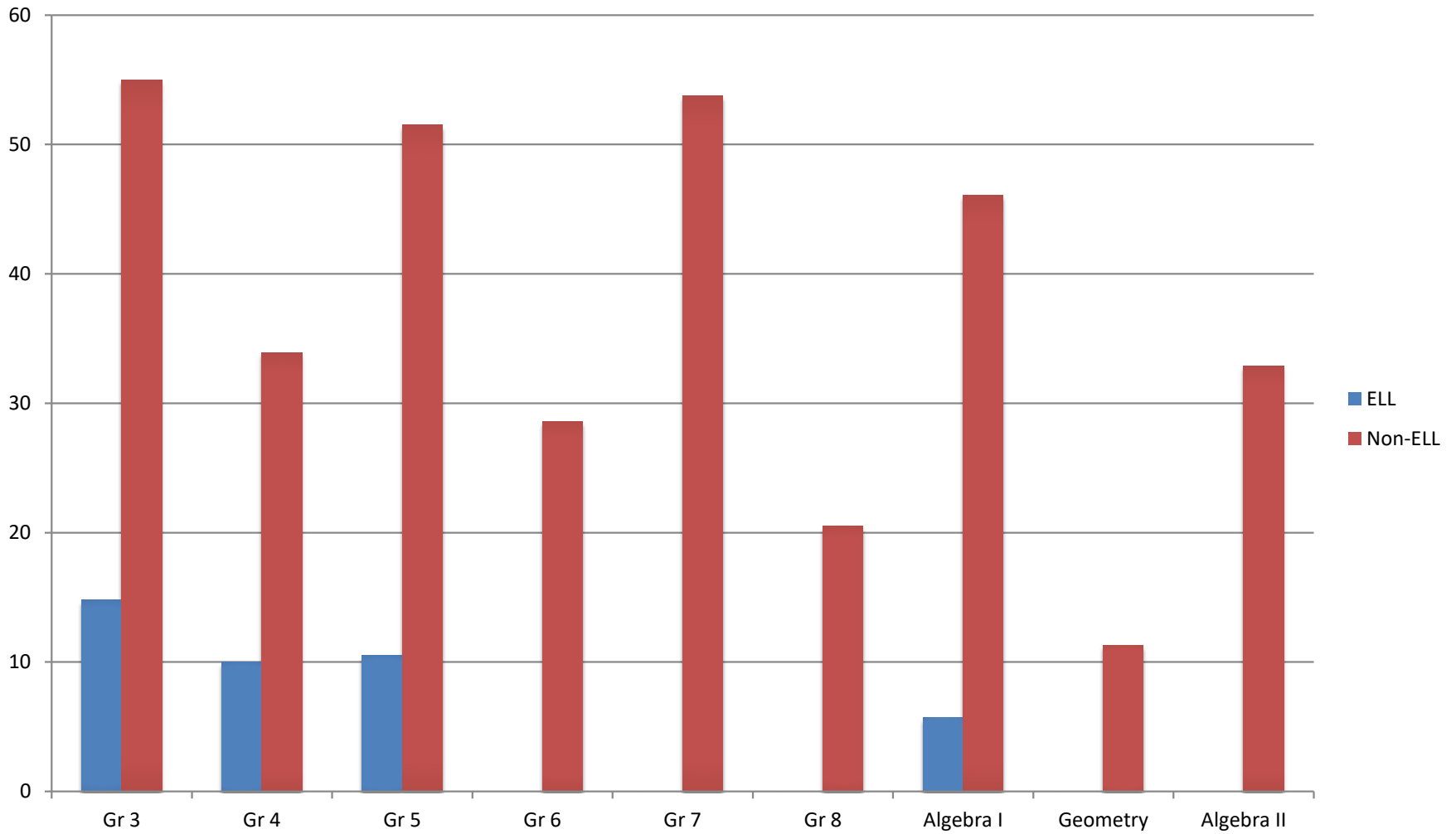
## Subgroup Performance of Non-Economically Disadvantaged vs. Economically Disadvantaged Students on Math PARCC Assessments – Fall Block 2017 and Spring 2018



## Subgroup Performance of Students with Disabilities on Math Assessments Fall Block 2017 and Spring 2018



## Performance of ELL Subgroup on Mathematics PARCC Assessments Fall Block 2017 and Spring 2018



# WIDA – ACCESS FOR ELLS

## Proficiency Levels

- **Entering** (minimal social language with visual and graphic support)
- **Emerging** (knows and uses some social English and general academic language with visual and graphic support)
- **Developing** (knows and uses social English and specific academic language with visual and graphic support)
- **Expanding** (knows and uses social English and some technical academic language)
- **Bridging** (knows and uses social and academic language working with grade level material)
- **Reaching** (knows and uses social and academic language at the highest level measured by this test)

# ENGLISH LANGUAGE PROFICIENCY TEST

## Results Focus On...

- Listening
- Speaking
- Reading
- Writing
- Oral Language
- Literacy
- Comprehension

## Overall Score Reflects

- 35% Reading
- 35% Writing
- 15% Listening
- 15% Speaking

# Overall ACCESS for ELL's Scores By Grade Level Spring 2018

	# of Students	Entering Level 1	Emerging Level 2	Developing Level 3	Expanding Level 4	Bridging Level 5	Reaching Level 6
<b>Grade K</b>	60	27%	12%	20%	17%	25%	0%
<b>Grade 1</b>	49	10%	24%	47%	14%	0%	0%
<b>Grade 2</b>	30	20%	20%	47%	13%	0%	0%
<b>Grade 3</b>	26	27%	15%	31%	27%	0%	0%
<b>Grade 4</b>	30	13%	10%	33%	40%	3%	0%
<b>Grade 5</b>	19	16%	37%	21%	26%	0%	0%
<b>Grade 6</b>	9	22%	22%	33%	22%	0%	0%
<b>Grade 7</b>	13	77%	8%	15%	0%	0%	0%
<b>Grade 8</b>	20	40%	25%	20%	10%	5%	0%
<b>Grade 9</b>	24	50%	17%	25%	0%	8%	0%
<b>Grade 10</b>	31	39%	35%	19%	3%	3%	0%
<b>Grade 11</b>	31	39%	19%	32%	10%	0%	0%
<b>Grade 12</b>	11	27%	27%	27%	18%	0%	0%



# DLM – DYNAMIC LEARNING MAPS

Dynamic Learning Maps® (DLM®) Alternate Assessment System tests academic progress in English language arts (reading and writing), math, and/or science. This assessment is designed for students with many types of significant cognitive disabilities. It is a completely individualized test designed so students can show what they know and can do. The assessment is given in short parts called “testlets” so a child does not become too tired or stressed.

The achievement levels are:

- The student demonstrates **emerging** understanding of and ability to apply content knowledge and skills represented by the Essential Elements.
- The student's understanding of and ability to apply targeted content knowledge and skills represented by the Essential Elements is **approaching the target**.
- The student's understanding of and ability to apply content knowledge and skills represented by the Essential Elements is **at target**.
- The student demonstrates **advanced** understanding of and ability to apply targeted content knowledge and skills represented by the Essential Elements.

“At target” means a child has met the alternate achievement standards in this subject at a child's grade level.

# Palisades Park's District DLM Results By Grade Level Spring 2018

Less than 10 students fall into this category, therefore results cannot be reported publically in order to maintain student confidentiality. Parents of students who take the DLM as required by their IEP, received the results along with school administration.

# DISTRICT PLAN TO INCREASE STUDENT ACHIEVEMENT

- Analyze PARCC Evidence Tables to identify weaknesses and create activities to address them.
- Teachers will learn about technology enhanced instruction and analyze data collection to create engaging and differentiated lessons and assessments for a 21<sup>st</sup> Century Classroom.
- ST Math, a visual instructional program that builds a deep conceptual understanding of math through rigorous and creative problem solving, will be added to the 3<sup>rd</sup> grade curriculum. It is presently used in grades K, 1, and 2.
- Continuation of math journals in all grade levels with a focus on rigorous problem solving. Power Up to PARCC will be a resource.
- Targeted Assistance classes to address individual student needs in mathematics, ELA, and ESL Newcomer Groups. These classes will meet from 8:00 – 8:25. Classes will change to meet needs.

# DISTRICT PLAN TO INCREASE STUDENT ACHIEVEMENT

- Teachers in grades 5 & 6 will receive Professional Development to implement a new reading program, *Reading Fundamentals*.
- Implement *Reading Fundamentals* in grades 1 to 4 in the 2019-2020 school year.
- Review and update curriculum in all content areas to address gaps.
- ESL teachers will meet monthly to strengthen teaching practices by using formative assessments such as WTW Inventories and DRA Word Analysis Tasks to analyze data to drive instruction.
- Create and implement incentives to encourage student attendance.
- Create and implement incentives such as a Study Island Contest, Raz Kids Reading Contest, and Vocabulary Parade.
- Begin to explore and pilot a new mathematics program.

# DISTRICT PLAN TO INCREASE STUDENT ACHIEVEMENT

- Teachers have received training on incorporating PARCC-style assessments in their lessons, including leveled multiple choice style questions, narrative and literary analysis, and research simulation tasks.
- Students identified as at-risk of underachievement on PARCC are placed in a study skills class, focusing on improving reading, writing, and math skills. Course objectives and materials are aligned to PARCC/Common Core standards and objectives.
- Reading/Writing 8 was added to the curriculum, adding an additional half-year Language Arts course for 8<sup>th</sup> graders.
- An ESL teacher is assigned to select Science and History classes for additional support.
- We must continue to stress that all teachers, regardless of content area, are literacy and writing teachers.

# DISTRICT PLAN TO INCREASE STUDENT ACHIEVEMENT

- Elective courses offered in English, History, and Math are aligned with PARCC-style questioning, further reinforcing appropriate skills and objectives.
- ESL Math courses are now offered to reach our ELL population. Lessons in ESL Math are designed to help students understand the same basic math terminology and concepts that their non-ESL peers are learning.
- All teachers are available for extra help after school every day except Wednesday. Many teachers are also working with struggling students before school to further support student achievement.

# HOW CAN PARENTS HELP?

- Stay informed.
- Visit [www.understandthescore.org](http://www.understandthescore.org) for PARCC resources.
- Visit <http://measinc-nj-science.com/> for NJSLA-Science Resources.
- Parents of ELL students can visit the WIDA Website <https://wida.wisc.edu/assess/access>.
- Parents of Special Education students can visit the DLM Website <https://dynamiclearningmaps.org/newjersey>.
- Access practice tests with your child at home.
- Review your child's school assignments.
- Communicate and partner with teachers to support learning.